

Original Paper

***Ilex moluccana* R. Kr. Singh, Deroliya & Sanjeet Kumar, a replacement name for *Ilex laurifolia* Zipp. ex Loes. (Aquifoliaceae)**

Rajeev Kumar Singh¹, Purushottam Kumar Deroliya^{1*} and Sanjeet Kumar²

¹Botanical Survey of India, Arid Zone Regional Centre, AIIMS Road, Jodhpur, Rajasthan, India

²Biodiversity and Conservation Laboratory, Ambika Prasad Research Foundation, Bhubaneswar, Odisha, India

*E-mail: purubsi2@gmail.com; ORCID: <https://orcid.org/0000-0002-3062-5453>

Article Details: Received: 2024-03-14 | Accepted: 2024-07-19 | Available online: 2024-07-22



Licensed under a Creative Commons Attribution 4.0 International License

Abstract: A new name, *Ilex moluccana* R.Kr.Singh, Deroliya & Sanjeet Kumar, is proposed herein to replace the illegitimate name *I. laurifolia* Zipp. ex Loes., being a later homonym of *I. laurifolia* Nutt. In addition, lectotype is designated here for the name *I. laurifolia* Zipp. ex Loes.

Keywords: Illegitimate, Indonesia, Later homonym, Lectotype, Syntype

Introduction

The cosmopolitan genus *Ilex* Tourn. ex L. (Aquifoliaceae) consists of about 566 species (POWO, 2024; Singh & Kumar, 2024) and the main centres of its distribution are Southeast Asia and South America (Loizeau et al., 2005). In Indonesia, the genus is represented by 18 species, namely *Ilex alternifolia* (Zoll. & Moritzi) Loes., *I. arnhemensis* (F.Muell.) Loes., *I. celebensis* Capit., *I. cymosa* Blume, *I. densifolia* Miq., *I. emmae* D.M.Hicks, *I. havilandii* Loes., *I. hicksii* I.M.Turner, *I. hypoglauca* (Miq.) Loes., *I. ketambensis* T.R.Dudley, *I. laurifolia* Zipp. ex Loes., *I. malaccensis* Loes., *I. nothophoeoides* I.M.Turner, *I. odorata* Buch.-Ham. ex D.Don, *I. revoluta* Stapf, *I. spicata* Blume, *I. stenura* (Merr. & L.M.Perry) D.M.Hicks and *I. triflora* Blume (POWO, 2024). However, the name *I. laurifolia* Zipp. ex Loes. (1901: 116) is illegitimate because it is a later homonym of *I. laurifolia* Nutt. (1822: 289) in accordance with Article 53.1 of the ICN (Turland et al., 2018). Therefore, a replacement name is herein proposed. Additionally, lectotype is designated for the name *I. laurifolia* Zipp. ex Loes., and the guidelines and recommendations of Article 9 of ICN (Turland et al., 2018) were followed.



Figure 1: Lectotype of *Ilex laurifolia* Zipp. ex Loes. (L0539737, © Naturalis Biodiversity Center, Leiden)



Figure 2: Isolectotype *Ilex laurifolia* Zipp. ex Loes. (A00444828, © Herbarium of the Arnold Arboretum, Cambridge, Massachusetts)



Figure 3: Syntype of *Ilex laurifolia* Zipp. ex Loes. (A02519741, © Herbarium of the Arnold Arboretum, Cambridge, Massachusetts)



Figure 4: Syntype of *Ilex laurifolia* Zipp. ex Loes. (L0544697, © Naturalis Biodiversity Center, Leiden)



Figure 5: Syntype of *Ilex laurifolia* Zipp. ex Loes. (L0544698, © Naturalis Biodiversity Center, Leiden)



Figure 6: Syntype of *Ilex laurifolia* Zipp. ex Loes. (L0544699, © Naturalis Biodiversity Center, Leiden)

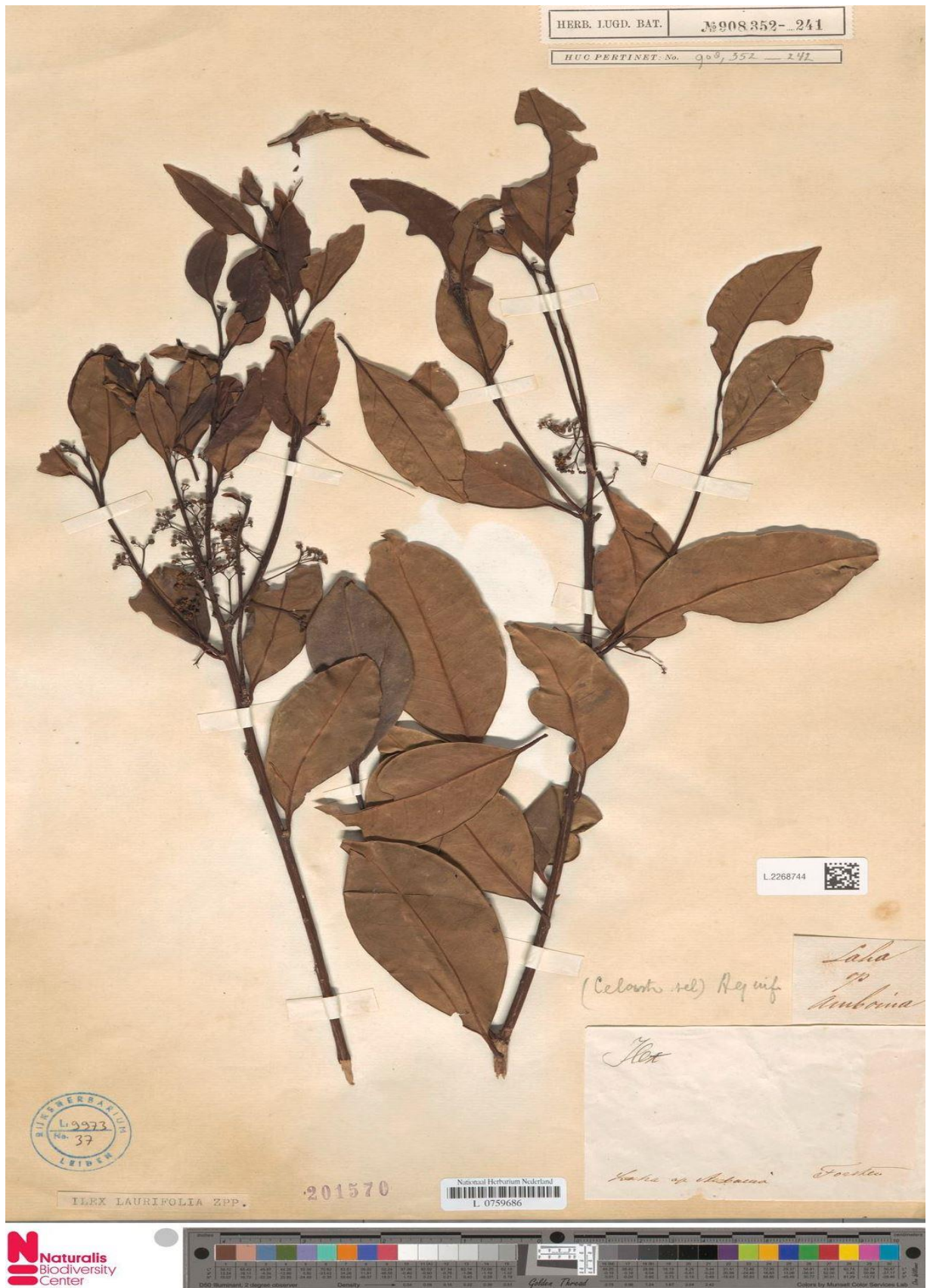


Figure 7: Syntype of *Ilex laurifolia* Zipp. ex Loes. (L0759686, © Naturalis Biodiversity Center, Leiden)

Nomenclature

Ilex moluccana R.Kr.Singh, Deroliya & Sanjeet Kumar, *nom. nov.*

≡ *Ilex laurifolia* Zipp. ex Loes., Nova Acta Acad. Caes. Leop.-Carol. German. Nat. Cur. 78: 116. 1901, *nom. illeg., non* Nutt., Amer. J. Sci. Arts 5: 289. 1822.

Lectotype (designated here): Indonesia, Moluccas (Maluku), Amboina (Ambon), *s.d.*, *A. Zippelius s.n.* (L0539737!, Figure 1); isolectotypes A00444809, A00444828! (Figure 2).

Remaining syntypes: Indonesia, Moluccas (Maluku), Amboina (Ambon), *s.d.*, *E.A. Forsten s.n.* [A02519741! (Figure 3), L0544697! (Figure 4), L0544698! (Figure 5), L0544699! (Figure 6), L0759686! (Figure 7)].

Distribution: Indonesia.

Etymology: Named after the type locality Moluccas.

Notes: Loesener (1901) mentioned type information for *Ilex laurifolia* as “*Ilex laurifolia Zippelius mss. in herb. Lugd.-Bat. I. cymosa Bl. var. laurifolia Zippelius mss. in herb. Lugd.-Bat.*”. For the name *I. laurifolia* Zipp. ex Loes., five syntypes collected by E.A. Forsten from Amboina, Moluccas, Indonesia (A02519741, L0544697, L0544698, L0544699 and L0759686) and three syntypes collected by A. Zippelius from Amboina, Moluccas, Indonesia (A00444809, A00444828 and L0539737) were traced. Among these, the better-preserved specimen L0539737, is designated here as the lectotype as it agrees well with the protologue.

Acknowledgements

The lead and corresponding authors are thankful to the Director, Botanical Survey of India, Kolkata for facilities and encouragement. We are grateful to the curators of A and L for the images and information of type specimens.

References

- Loesener, L.E.T. (1901). Monographia Aquifoliacearum. Nova acta Academiae Caesareae Leopoldino-Carolinae Germanicae Naturae Curiosorum 78: 1–598.
- Loizeau, P.A., Barriera, G., Manen, J.F. and Broennimann, O. (2005). Towards an understanding of the distribution of *Ilex* L. (Aquifoliaceae) on a World-wide scale. Biologiske Skrifter 55: 501–520.
- Nuttall, T. (1822). Catalogue of plants growing in East-Florida. The American Journal of Science, and Arts 5: 286–304.
- POWO. (2024). Plants of the World Online. Royal Botanic Gardens, Kew. Available from: <http://www.plantsoftheworldonline.org/> (accessed 16 March 2024).
- Singh, R.K. and Kumar S. (2024). *Ilex edwinii* R. Kr. Singh & Sanjeet Kumar, a replacement name for *I. sulcata* Edwin (Aquifoliaceae). Journal of Biodiversity and Conservation 8(2): 3–7.
- Turland, N.J., Wiersema, J.H., Barrie, F.R., Greuter, W., Hawksworth, D.L., Herendeen, P.S., Knapp, S., Kusber, W.-H., Li, D.-Z., Marhold, K., May, T.W., McNeill, J., Monro, A.M., Prado, J., Price, M.J. and Smith, G.F. (2018). International Code of Nomenclature for algae, fungi, and plants (Shenzhen Code). Regnum Vegetabile 159. Koeltz Botanical Books, Glashütten. <https://doi.org/10.12705/Code.2018>